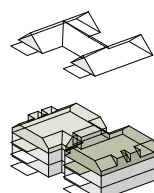
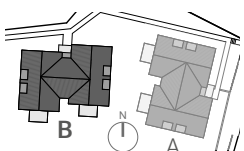


WOHNUNG B 3.2

5½ Zimmer-Wohnung / DG

| | | |
|------------------|------------------|----------------------|
| Nettowoohnfläche | inkl. Innenwände | 129.0 m ² |
| Nutzfläche | exkl. Innenwände | 123.0 m ² |
| Balkon gedeckt | | 13.0 m ² |
| Keller | | 11.5 m ² |



DG
OG
EG



MST. 1:100

